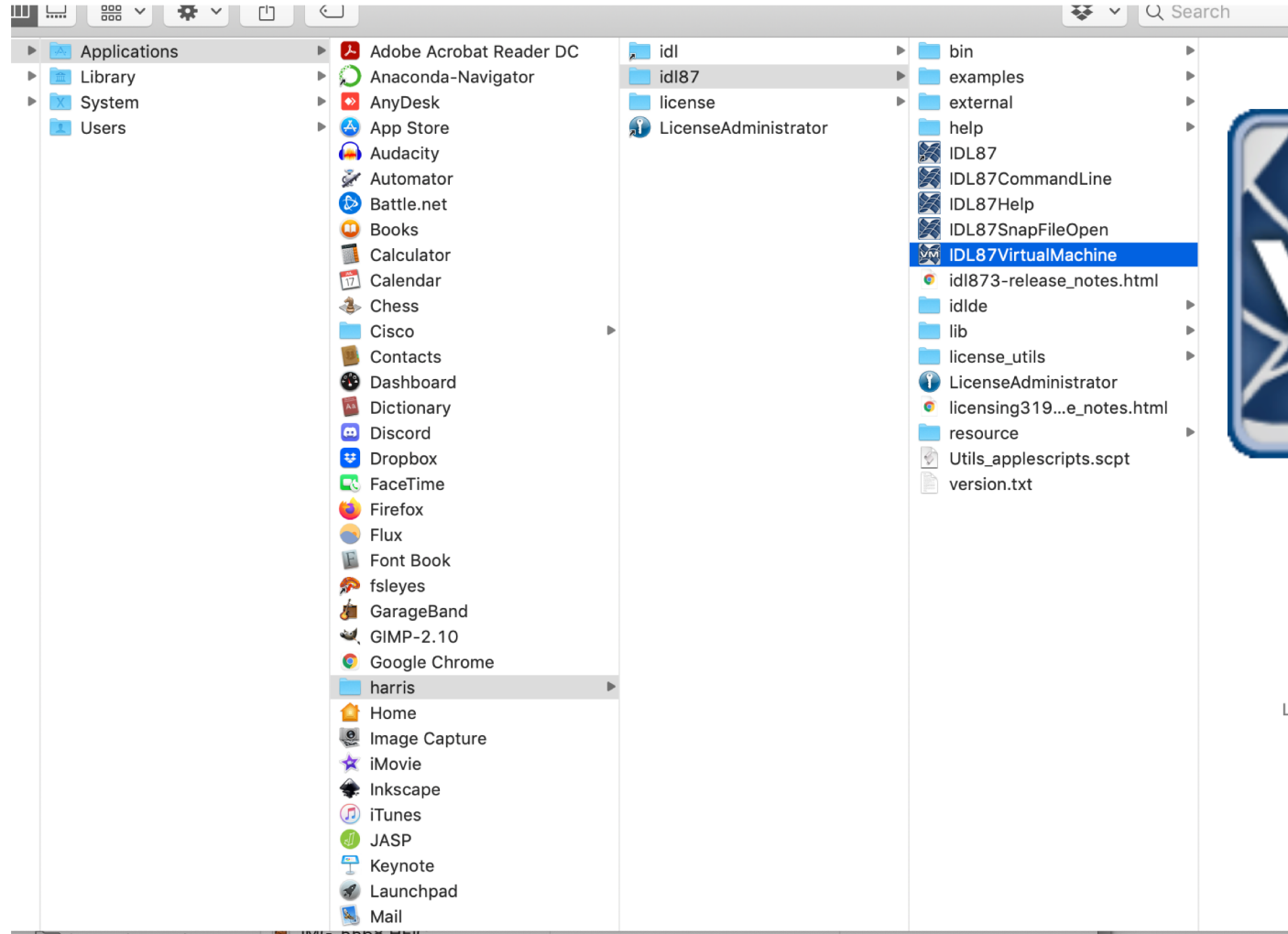
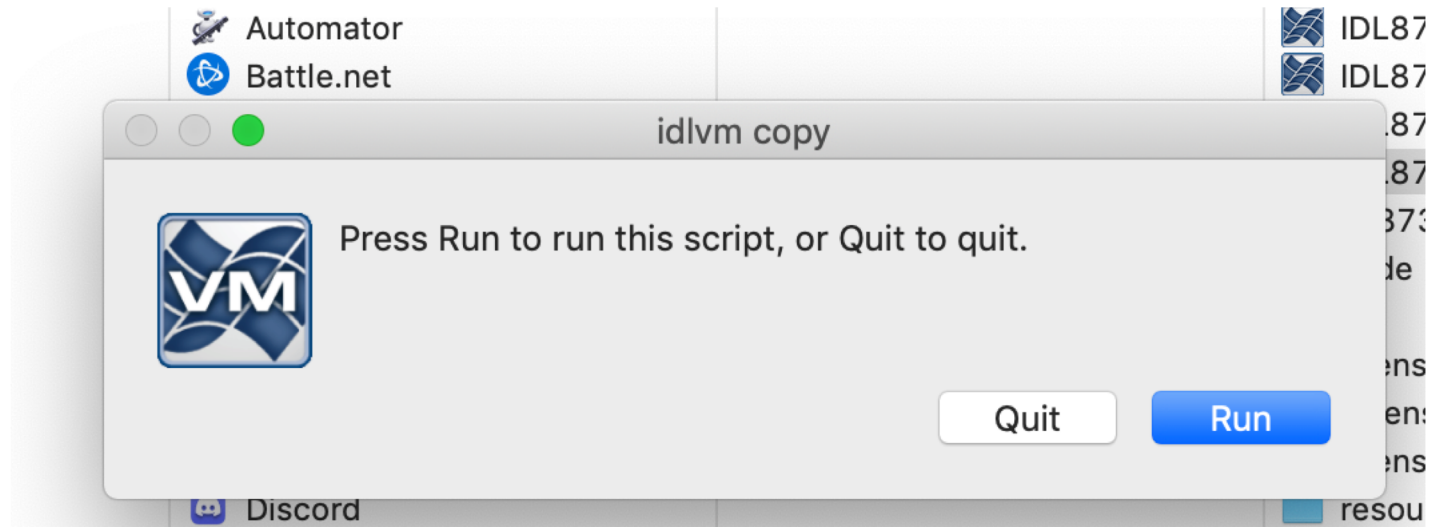


NRU PK-course lab exercises on osx

Find the IDL installation under “./Applications/harris”. Click on ./idl87/IDL87VirtualMachine



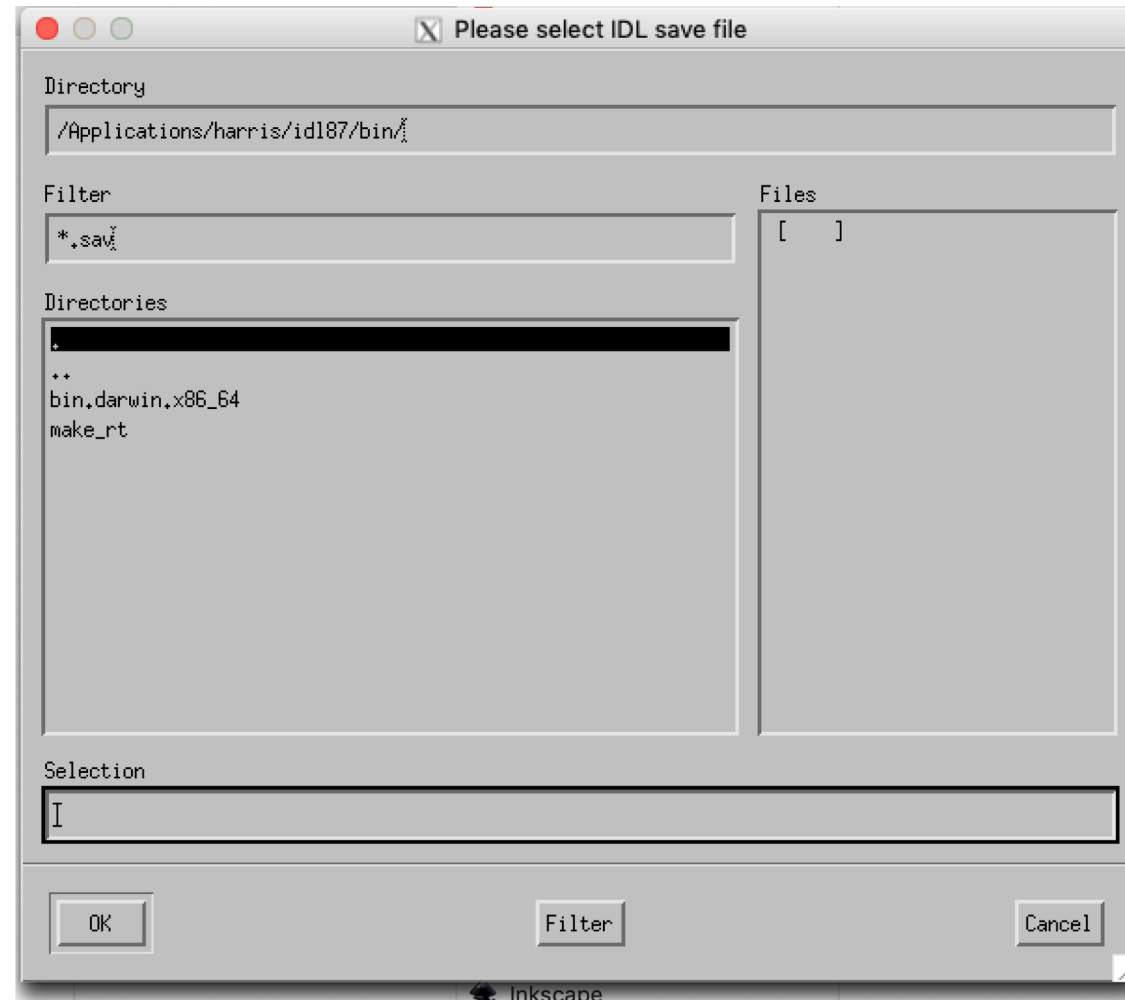
Click Run



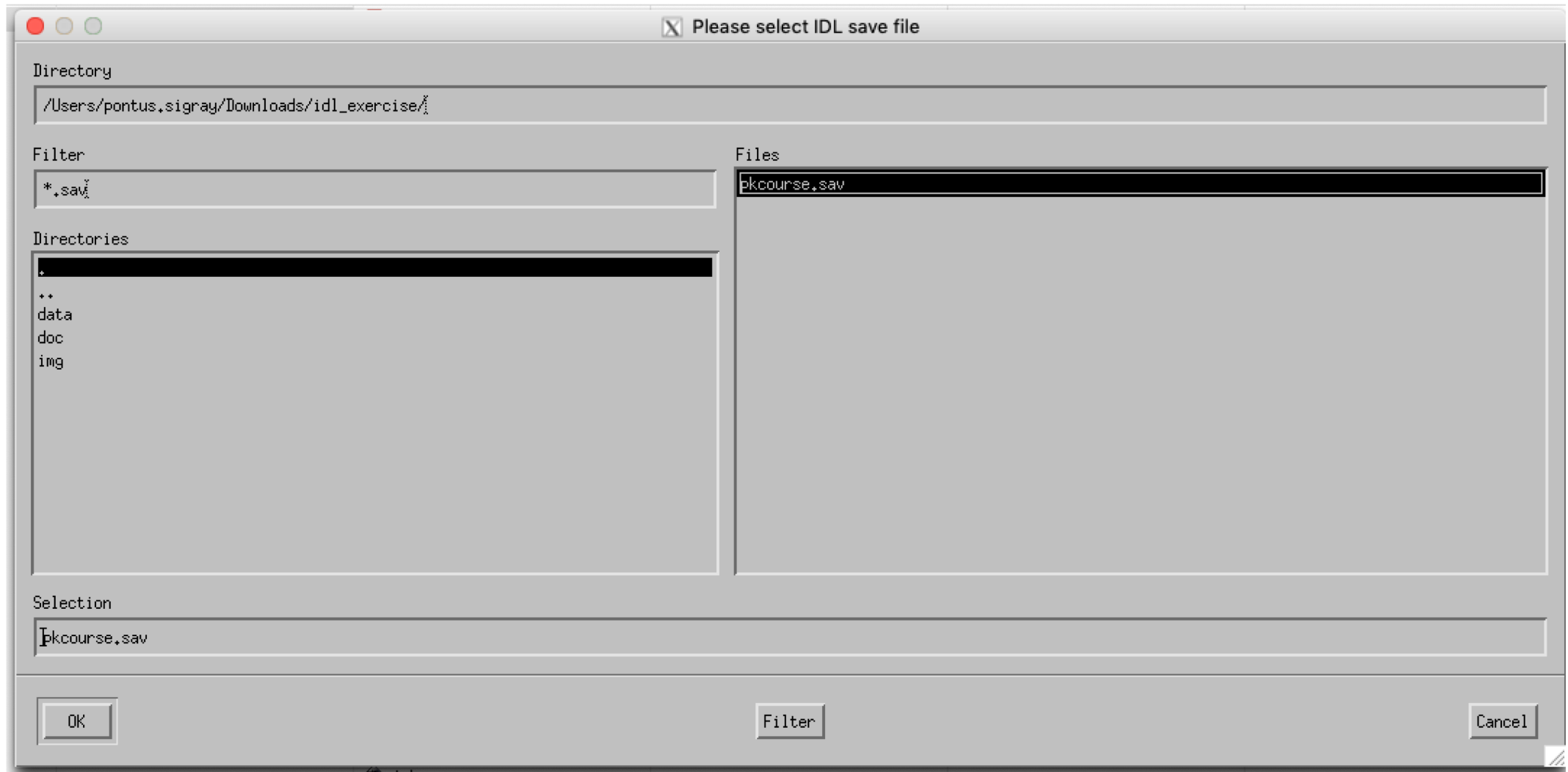
Click Ok



Navigate to the folder where the exercise
“*.sav” files is saved (e.g. in “./Downloads”)



Select the “./pkcourse.sav” file. Click ok.



The exercise GUI should open.

